



SISTEMA TERRAE

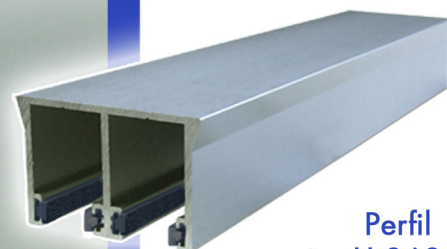


Sistema TERRAE

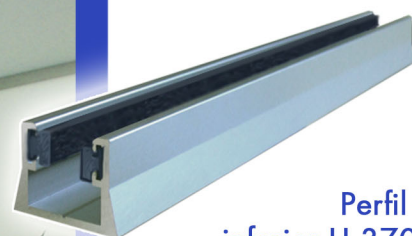
PUERTAS HASTA 75 KGS.

(Puertas correderas + fijo)


interiorismo
Punto Vidrio



Perfil superior H 368



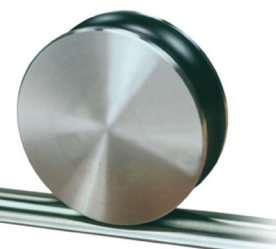
Perfil inferior H 370



Guía de suelo H 373



Tope H 371



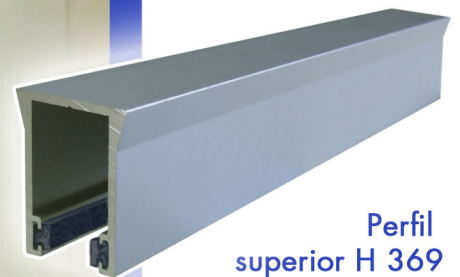
Rueda H 319



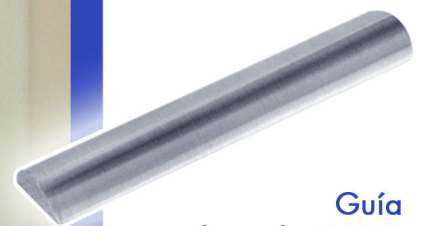
Sistema TERRAE

PUERTAS HASTA 75 KGS.
(1 Puerta corredera)

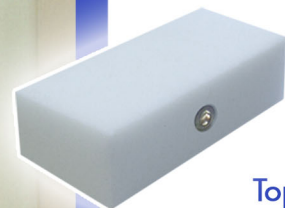

interiorismo
Punto Vidrio



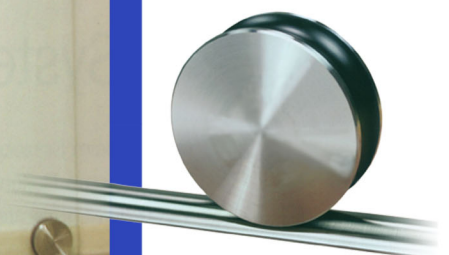
Perfil superior H 369



Guía de suelo H 373



Tope H 371



Rueda H 319

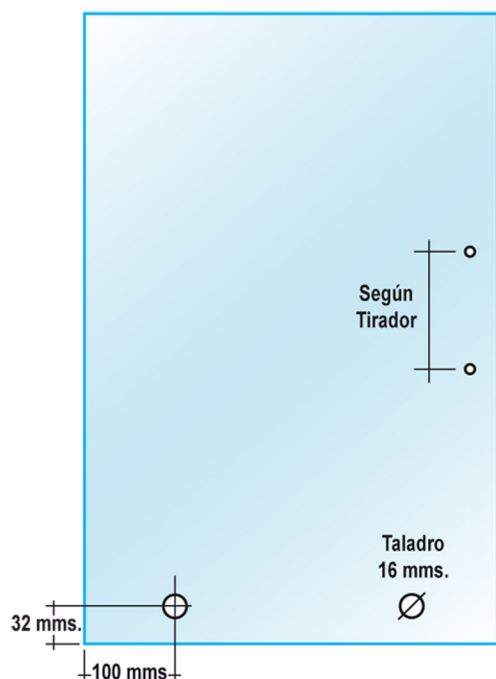
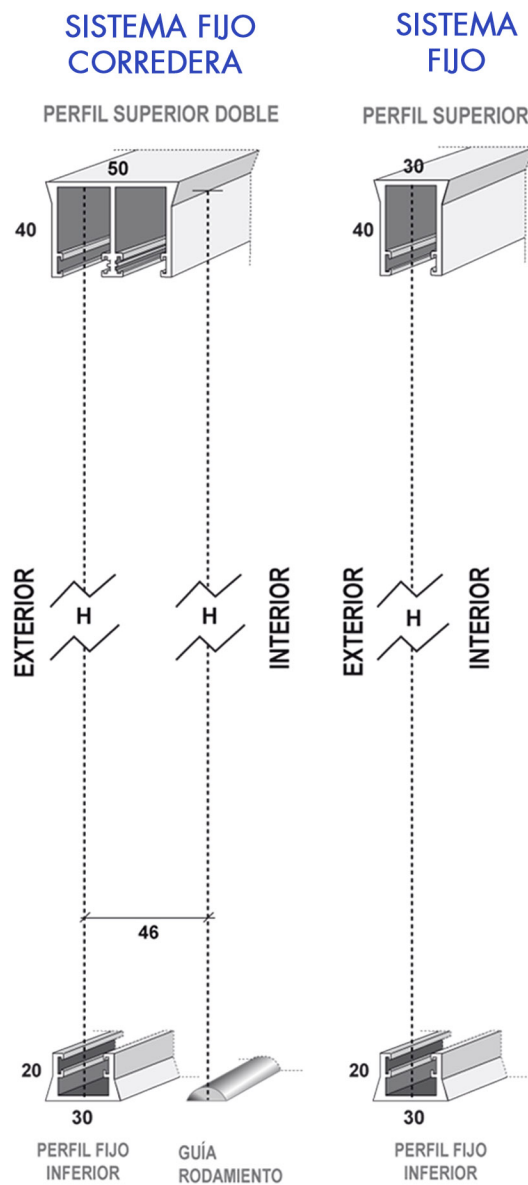
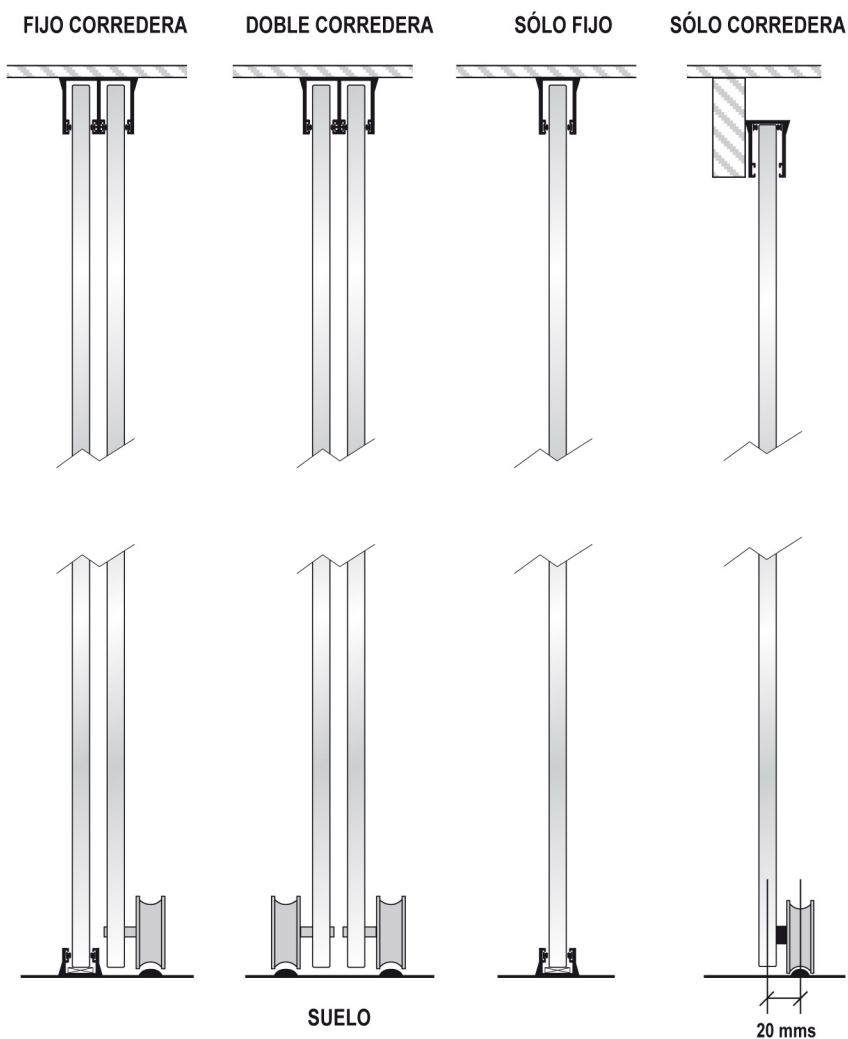


Sistema TERRAE



Instalación de guías

Punto Vidrio



Ubicación de los taladros en el vidrio

